



Powering our sustainable future

<b>Our mission</b>	<b>04</b>
<b>Our solution</b>	<b>07</b>
<b>Our future</b>	<b>08</b>
<b>Charging solutions</b>	<b>16</b>
Charging solutions tailored your way	18
For retail, hospitality, commercial parking	20
For fuel retail	22
For transit and transport	24
For car fleets	26
For charging service providers and utilities	28
For workplaces	30
For residential	32
<b>Product overview</b>	<b>34</b>
EVBox Charging Management Software	36
EVBox Elvi	38
EVBox BusinessLine	40
EVBox Iqon	42
EVBox Troniq 50	44
EVBox Troniq 100	46
EVBox Ultroniq	48
EVBox Accessories	50
<b>Partner with us</b>	<b>52</b>
<b>Charge with us</b>	<b>54</b>

# Our **mission**

Mobility is an essential part of everyday life. It has reinvented the way we do business and given us the freedom to travel farther than ever before—but this has come at a price. To reduce transport's impact on the environment, electric mobility must be embraced by everyone. Businesses play a key role in making this happen.

Since 2010, our electric vehicle charging solutions have helped thousands of forward-thinking businesses around the world adopt electric mobility and achieve their goals. By 2023, our customers and partners will have helped us install one million charging ports to make transport cleaner and more accessible.

As charging needs evolve, we'll continue providing the infrastructure and expertise needed to adopt electric mobility—along with all the support to keep customers happy and vehicles on the move. Working together, we can shape a sustainable future for transportation that's better for everyone.



**"We empower forward-thinking businesses to build a sustainable future by providing flexible and scalable electric vehicle charging solutions."**

**KRISTOF VEREENOOGHE**

President & CEO, EVBox Group





**“We are able to quickly and efficiently deliver high production volumes so we can confidently meet and exceed your and your customers’ expectations, while adhering to strict social and environmental standards.”**

**PETER VAN PRAET**

Chief Operations Officer, EVBox Group

# Our solution

We offer electric vehicle charging solutions with uncompromising quality and reliability. Our charging solutions maximize the return on investment, while minimizing costs. From the installation and online integration of every station, to the tracking and billing of all charging sessions. We help everyone operate and manage their charging stations with ease and efficiency.

Creating, distributing, and maintaining our charging solutions around the world is an operation that contains a lot of moving parts. To make sure we're as kind to our planet as possible, we ensure our supply chain and ways of working are as sustainable as the solutions we develop and the future we envision.

Our local manufacturing plants and distribution centers across North America and Europe reduce the need for long-distance shipping, so our solutions can be distributed quickly and efficiently, while cutting out unnecessary transportation and saving on CO2 emissions.

In collaboration with a global supply chain partner with a proven track record in procurement and network optimization, we're able to quickly and efficiently deliver significantly higher production volumes. This means we can confidently meet and exceed your and your customers' expectations, while adhering to strict social and environmental standards.

# Our future

There will be over 130 million electric vehicles sold by 2050, and global EV sales are expected to make up more than 50% of sales in the majority of vehicle segments by 2040. Vans, trucks, and buses are expected to make more of a mark on overall EV sales by 2035.

By 2030, 65% of the population of the 20 largest European cities will live in areas that have banned diesel and ICE vehicles. California, on the other hand, was the largest spender on EV infrastructure rebates, which will help to create sufficient charging infrastructure that can support the potential 1.5 million EVs that California aims to have on its roads by 2025.

Meanwhile, we will see a continued decrease in the price of EV battery packs—to the point where we could see a \$100/kWh lithium-ion battery pack entering the market by 2023.

As a result, access to electric vehicle charging facilities have become a necessity—not just for every garage or parking lot, but for all establishments that are visited frequently. We cater our charging solutions to these locations to give more charging access to electric vehicle drivers across the world, and to get the greatest return of investment for every charge port operator like yourself.

Sources: [IEA](#) · [California Air Resources Board](#) · [BNEF](#)



**"We wanted to make life easier for our staff and visitors who drive electric—but we discovered that offering EV charging is now also a requirement by law for new buildings. Our systems integrator chose EVBox as its intelligent products allow us to easily manage our site's distribution of power and scale our charging network in the future."**

**JOHN VAN DER DRAAIJ**

Site Operations Manager, Unilever's Innovation Centre





**"As a technology company, we were very interested in exploring charging infrastructure because we believe electrification will be the main driver for the transition to green energy and sustainable transport. EVBox's Partner Program helped us to become experts in supplying EVSE solutions. This allowed us to go to market with confidence, build our sales funnel, increase revenue, and produce an overall increased ROI."**

**AHMED SAMIR ELBERMBALI**

EV Charging Consultant, CATEC Mobility, CATEC LLC

# How we empower your business to reach your revenue and sustainability goals

## **We get you trained and certified**

Get certified for installing and operating our charging solutions, while also increasing your commercial and technical capabilities within the electric mobility industry.

## **We help you create new revenue**

Get priority access to top-quality leads in our Partner Portal. Simply follow up and increase your profit margins as you develop your EV charging business.

## **We increase your reach**

Enhance your EV charging offering with our smart and scalable solutions. Plus, make easier sales with our ready-made marketing and product assets.

## **We expand your network**

Join our fast-growing partner community to seize business opportunities and build relationships through networking events and tradeshows, worldwide.



# Join the REVOLUTION

REVOLUTION is our annual networking and idea-sharing conference tailored for the electric mobility industry. Each year, the sector's finest gather in Amsterdam for a full day of inspiring presentations and conversations aimed at answering the question: "What can we do to accelerate the adoption of sustainable mobility?"

Featuring a variety of keynote speakers that cover everything from global market predictions to best practices for EV adoption, attendees are encouraged to bring the day's insights back to their markets and utilize their new-found connections to make real progress in EV adoption. Learn more about this initiative at [revolutionconference.com](http://revolutionconference.com).

**"At the end of the day, if EV drivers aren't having a good experience, they're not going to use the chargers, and nobody is going to be successful—not the company, the site host, or the automaker. So, we all have to focus on what's the best experience for our users."**

**CHELSEA SEXTON**

EV Advocate & Advisor





**"I believe that the decisions we are making right now concerning the future of mobility are powerful tools to effect real change."**

**RON GARAN**

NASA Astronaut





## One charger one tree

We all have a responsibility to reduce our carbon footprint. That's why for every charge port we sell, we plant a tree. Partnering with global reforestation charity, OneTreePlanted, has allowed us to give back to the environment, create a healthier climate, protect biodiversity, and help reforestation around the world.

We encourage companies and individuals like yourself to take part in initiatives to help our planet. If you'd like to contribute, you can plant a tree at [onetreepanted.org](https://onetreepanted.org) or learn more about this initiative at [evbox.com/about/onechargeronetree](https://evbox.com/about/onechargeronetree).

Charging **solutions**

<b>Charging solutions</b>	<b>16</b>
Charging solutions tailored your way	18
For retail, hospitality, commercial parking	20
For fuel retail	22
For transit and transport	24
For car fleets	26
For charging service providers and utilities	28
For workplaces	30
For residential	32

# Charging solutions tailored your way

Electric mobility tailored your way with charging stations, charging management software, and services, all in one place.

## Scalable

AC and DC charging stations

We provide you with flexible and scalable EV charging stations ranging from 3.7 kW to 350 kW for home, commercial, and public use.

## Intelligent

charging management software

We help you track, manage, and optimize EV charging at commercial and residential locations.

## Comprehensive

support and services

We provide you with comprehensive support through an extensive list of services and trainings for the easy operation and maintenance of EVBox hardware and software.







# Retail, hospitality, commercial parking



## Stand out from the crowd with quality EV charging

Attract high-value customers to your location thanks to visibility on EV charging maps. Our chargers are built for commercial locations, with custom branding options and features that are designed with EV drivers in mind. They're reliable and easy-to-use, offering a seamless experience that will delight your guests and convert them into loyal customers.



## Elevate the value exchange with your customers

EV driving does more than attract customers to your main business. Leverage our charging management software to set a fee on sessions and generate an additional revenue stream, contributing to a quicker return on investment. Our solutions can integrate with your existing customer apps and programs so that you can keep your customers close to you.



## Scalable solutions that work with you

Look no further for a charging solution that's designed to grow with your business and the market. With over 10 years of expertise and a global network of partners, we confidently offer one-stop procurement of chargers, software, and services. Whether it's your first charging station or your next network expansion, we're here to make EV charging work for you.





**WHAT CUSTOMERS HAVE TO SAY ABOUT  
OUR CHARGING SOLUTIONS**

**“With more and more electric vehicles on the road, installing charging stations in cinemas is now becoming a part of history. This allows us to offer our customers an additional service. With the EVBox Troniq 50 fast chargers, visitors can recharge their battery while quietly watching a movie.”**

**ROBERT LABORIE**

Development Director, CGR Group

**“In this day and age, all hotels and restaurants should offer charging stations for electric vehicles. They are also a great service we can offer to our guests. For us, EVBox was a choice easily made.”**

**CARSTEN KLINT**

Owner, The Central Park by Ron Blaauw



# Fuel retail



## The professional partner you can rely on

Implementing EV charging that is scalable and future-proof! With EVBox, your roll-out plan is supported by 10+ years of global expertise, as well as servicing options provided by us and our partners. Our sustainable growth and innovation are backed by stable and robust funding, so you know EVBox is here for you as a long-term partner.



## Solutions that fit perfectly with your business and fuel stations

Our goal is to help you build smart and scalable EV charging networks while reducing grid impact. Our flexible, end-to-end portfolio covers AC and DC charging stations, charging management software, and services. From turnkey solutions to hardware-only options, we help you find the right mix to integrate into your operations.



## A charging experience your customers will love

We make it easy for you to satisfy EV drivers. You can offer customers charging while they wait and shop at your adjacent retail sites. Our high-quality chargers can achieve 99.5% uptime so that they are available when drivers need them. Everything from the weighted cables to the touchscreen is designed for optimal user experience, enabling your customers to leave charged and happy.



# Transit and transport



## A charging solution tailored to your needs

Our experts guide you throughout your journey towards sustainable transport and help you design the right EV charging network that fits your needs. We analyze fleet driving cycles, energy costs, and grid constraints, optimizing total operating costs.



## Hassle-free operations

Our certified service partners, speaking your language and located in your proximity, provide expert maintenance and support services to help maximize uptime and avoid interruptions. They also provide training to enable self-help and cost optimization.



## End-to-end optimization

We facilitate the electrification of your vehicles by integrating with the fleet and energy management solutions of your choice. We make planning and execution of vehicle dispatch and charging an integrated and optimized process.

**WHAT CUSTOMERS HAVE TO SAY ABOUT  
OUR CHARGING SOLUTIONS**

**“The installation of our wind farm fits in with the further expansion of ICO’s flagship terminal, where the principles “green” and “digital” are central. With a surface area of 200 ha, and a 3.2 km quay, our terminal for electric fleets will be the largest of its kind. With extensive digitization, innovative handling techniques, and EVBox’s chargers powered by green energy, we’re preparing ourselves for an electric future.”**

**MARC ADRIANSENS**

Managing Director, ICO Zeebrugge





# Car fleets



## Offer a seamless driving experience

We provide easy-to-use charging solutions that make EV driving effortless and enjoyable. Thanks to the universal compatibility of our products and their wide range of smart features, our charging stations deliver a seamless charging experience for private, B2B, and public use cases.



## Charging infrastructure tailored to your operation

We provide reliable and tailor-made configurations that integrate into any operation—keeping your fleet ready to go at all times. Our charging solutions provide you with everything you need in one place to easily manage your charging network.



## Intelligent solutions

Our charging solutions help you to reduce maintenance costs and optimize your energy consumption. Get a quick return on your investment and generate additional revenue by setting charging fees for visitors.



**WHAT CUSTOMERS HAVE TO SAY ABOUT  
OUR CHARGING SOLUTIONS**

**“We’ve chosen specialists who can fully take care of the needs of both ourselves and our customers and dealers. Thanks to EVBox and ENGIE, we can offer a “one-stop shop”— a complete package for private, public, and fleets, including installation (advice) and aftersales.”**

**MAARTEN VAN DEN OETELAAR**

CASE Implementation Manager, Mercedes-Benz



# Charging service providers and utilities



## One-stop-shop for all your charging needs

As a global company with an international presence in more than 70 countries, we can support you wherever you want to grow your business. We can support all your charging network needs with our solutions, including services, software, hardware—both for AC and DC, ranging from 3.7 kW to 350 kW.



## Professional partner that you can rely on

We have more than 10 years of expertise in AC and DC technology development and manufacturing, so you can rely on us when growing your charging network. Together with our extensive network of service and maintenance partners, we make sure that your charging stations are operated, maintained, and serviced with the highest possible uptime.



## Futureproof charging experience that your customers will love

Earn the loyalty of your customers by offering a seamless (fast) charging experience with an intuitive and user-friendly interface, ergonomic charging cables, and the promise of continuous high power. Thanks to a scalable design, smart charging features, and the robustness of our charging solutions you can serve any EV today or in the future, so your investment stays protected.





**WHAT CUSTOMERS HAVE TO SAY ABOUT  
OUR CHARGING SOLUTIONS**

**“We’re leading the pack and positioning ourselves as the pioneers of the electric mobility market in our region. We’re heavily investing in the roll-out of electric fleets across urban areas. By providing charging solutions that already have an impressive track record, EVBox helps us to become the hub for ENGIE’s new mobility initiatives in South America.”**

**RODRIGO SANCHEZ**

Head of Green Mobility, ENGIE Factory, Chile



# Workplaces



## Hassle-free EV charging

Our certified installers ensure your stations are installed quickly and we also offer ongoing maintenance. Plus, our automated payment flows make settling charging costs between stakeholders quick and easy.



## A sound investment

Our cost-efficient solutions let you scale your charging network easily. Plus, we keep your total cost of ownership low thanks to the high uptime and reliability of our hardware. What's more, you can generate additional revenue by setting charging fees for visitors.



## Reach your sustainability goals

Keep your employees and customers happy by offering the convenience of charging at your location—all while complying with the latest sustainability regulations. Plus, you can generate smart reports based on your needs.



**WHAT CUSTOMERS HAVE TO SAY ABOUT  
OUR CHARGING SOLUTIONS**

**“We believe LA should be a global focal point for advancing electric vehicle infrastructure and mobility innovation. That’s why we’re building a state of the art EV showcase at the La Kretz Innovation Campus where we can demonstrate a variety of smart charging equipment, EVs, and mobility solutions. We’re pleased to have a global leader such as EVBox helping us on this project.”**

**BEN STAPLETON**

Chief Partnerships Officer, Los Angeles Cleantech Incubator (LACI)



# Residential



## An all-in-one solution

From our flexible hardware and scalable charging management software, to an extensive list of support and services, our integrated charging solutions streamline your operations and drive growth forward.



## Streamline your costs and revenue

Enjoy hassle-free cost settlements between you and your tenants or increase your ROI by generating revenue from visitors charging their EVs. You can also export detailed reports based on your needs.



## Future-proof your property

Enhance the value of your property, meet sustainability goals, and attract and retain high-value residents by providing a seamless EV charging solution. Plus, scale your charging operation easily with our smart installation options.



WHAT CUSTOMERS HAVE TO SAY ABOUT  
OUR CHARGING SOLUTIONS

**“The Timmerhuis is actively helping the city improve its air quality. We understand very well that electric transport is crucial to this process. We opted for EVBox as they are the EV charging supplier at De Rotterdam, which is another sustainable multi-purpose skyscraper designed by Rem Koolhaas. Since EVBox is a trusted, established name, we knew we could rely on its service.”**

**NIELS KURVER**

Real Estate Developer, Timmerhuis, City of Rotterdam



# **Product** overview

<b>Product overview</b>	<b>34</b>
EVBox Charging Management Software	36
EVBox Elvi	38
EVBox BusinessLine	40
EVBox Iqon	42
EVBox Troniq 50	44
EVBox Troniq 100	46
EVBox Ultroniq	48
EVBox Accessories	50
<b>Partner with us</b>	<b>52</b>
<b>Charge with us</b>	<b>54</b>

# EVBox Charging Management Software

## Convenient

### station management

Manage an unlimited number of charging stations, transactions, and users from a single interface with ease and efficiency. Monitor your entire charging network conveniently via a web browser or start and stop charging sessions in the palm of your hand with the EVBox Charge app.

## Generate

### a hassle-free income

Automate the invoicing and reimbursement of charging costs with multiple stakeholders and generate hassle-free income by setting fees for your charging station users. You can also publish your charging stations online to ensure all EV drivers can find your stations easily on EV charging maps.

## Scale

### your business

Monitor, optimize, and report on all aspects of your fleet and EV infrastructure from our new, easy-to-use Business Portal. Get actionable insights into charger status, charging patterns, and energy consumption to help you make better business decisions.

## Applicable for



Workplaces



Commercial parking



Apartments and homes



Hospitality and retail



Car fleets

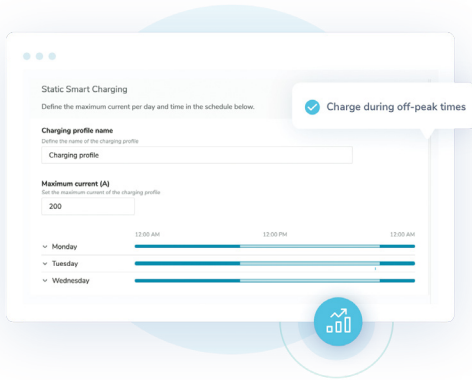


Transit and transport



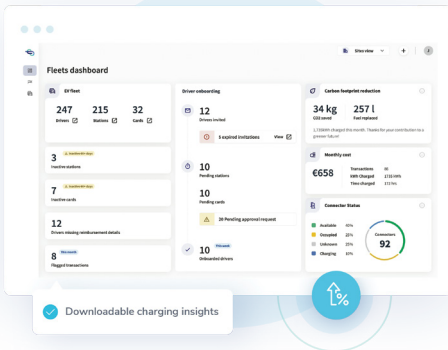
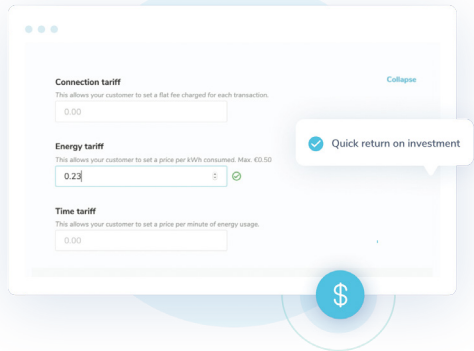
Electric vehicle drivers





- ✔ Control stations remotely via a phone or computer
- ✔ Optimize power usage with smart charging profiles
- ✔ Configure Autostart to charge without a card or app

- ✔ Set custom charging fees to earn revenue
- ✔ Automate invoicing and reimbursement
- ✔ Publish stations on charging maps to attract drivers



- ✔ Get detailed real-time charging information
- ✔ Filter and export transaction data (CSV)
- ✔ Manage your entire charging network in one place

# EVBox Elvi

Home charging solution

## Adaptable

to every vehicle

- Upgradable charging capacity
- Modular and compact design

## Hassle-free

charging at home

- Easy to install and maintain
- Available with a fixed cable or connector

## Full control

over energy usage

- Real-time insights via your smartphone or computer
- Automatically adjust power consumption

<b>Charging capacity</b>	7.4 kW, 11 kW, 22 kW
<b>Connector</b>	Available with (Type 1 or Type 2) fixed cable or Type 2 socket
<b>Cable length</b>	6 meters
<b>Communication</b>	Wi-Fi / Bluetooth 4.0 / UMTS (3G) & 4G (LTE) modem (optional)
<b>Housing</b>	Polycarbonate
<b>Mounting</b>	On a wall or on a pole

Optional wireless Hub-Satellite clusters of 11 stations (1 Hub + 10 Satellites) to enable load balancing.

Dynamic load balancing available via optional add-on.

Consult the **EVBox Elvi Product Brochure** for all technical features.

*\*Based on the average consumption of 18 kWh per 100 km.*

*Actual consumption depends on the vehicle, battery size, and driving conditions.*

**From 7.4 kW to 22 kW**  
Charges up to 120 km in one hour\*



# EVBox BusinessLine

## Business charging solution

### Reliable

in every situation

- Durable, weatherproof design
- Integrated RCBO and AC/DC leakage detection

### The best choice

for your location

- Flexible configurations
- Indoor and outdoor installation

### Expand

your charging network, easily

- Efficient distribution of available energy with load balancing
- OCPP-compliant, remote support, and firmware upgrades

<b>Charging capacity</b>	7.4 kW, 11 kW, 22 kW
<b>Connectors</b>	with Type 1 or 2 fixed cable, Type 2 socket, or Type 2 socket with shutter
<b>Cable length</b>	6 meters
<b>Number of connectors</b>	One or two
<b>Communication</b>	GPS / GSM / 3G, along with Wi-Fi / Bluetooth / 4G (LTE) modem on 4th generation stations
<b>Electrical protections</b>	Integrated RCBO, AC/DC leakage detection (on 4th generation stations)
<b>Housing</b>	Polycarbonate
<b>Mounting</b>	On the wall or on a pole

Dynamic load balancing available via optional add-on.

Consult the **EVBox BusinessLine Product Brochure** for all technical features.

*\*Based on the average consumption of 18 kWh per 100 km.*

*Actual consumption depends on the vehicle, battery size, and driving conditions.*

**From 7.4 kW to 22 kW**  
Charges up to 120 km in one hour\*



# EVBox Iqon

Commercial charging solution

## Accessible charging

for everyone

- Auto-locking and auto-retractable cables
- Intuitive 8" touchscreen
- Wheelchair accessible

## Manage stations

with peace of mind

- Easy to install and maintain
- Always connected with Wi-Fi and 4G LTE
- Manage your charging network in one place

## Scale easily

and earn revenue quickly

- Set custom charging fees
- Software agnostic (OCPP-compliant)
- Up to 20 charge ports per Hub-Satellite configuration

<b>Charging capacity</b>	Up to 7.2 kW (NA) and 22 kW (EU) per cable
<b>Connectors</b>	Two connectors with Type 1 or Type 2 cables
<b>Cable length</b>	5.5 m / 18 ft with smart cable management system
<b>Communication</b>	GPS / GSM / GPRS / Bluetooth 4.0 / 4G (LTE) modem
<b>Display</b>	8" LCD full-color touchscreen with 4 selectable languages
<b>Mounting</b>	Ground-mounted (freestanding, wall-supported, or back-to-back)

Dynamic load balancing available via optional add-on.

Consult the **EVBox Iqon Product Brochure** for all technical features.

*\*Based on the average consumption of 18 kWh per 100 km.*

*Actual consumption depends on the vehicle, battery size, and driving conditions.*



**Up to 7.2 kW (NA) and 22 kW (EU)**

Charges up to 120 km in one hour\*



reddot design award  
winner 2019

# EVBox Troniq 50

Fast charging solution

## Dependable

charging for every vehicle

- High-quality electrical components and rugged housing
- Compatible with CHAdeMo, CCS 2, and AC Type 2 connectors

## Hassle-free experience

for every driver

- Auto-retractable cables
- 7" multi-language touchscreen

## Smart management

of every charging network

- Optional battery storage
- Customizable charging tariffs

<b>Charging capacity</b>	50 kW
<b>Charge modes</b>	Mode 4 (DC charging – CHAdeMO and CCS 2) Mode 3 (AC charging – Type 2) (optional) Mode 2 (Type E/F) (optional) (EN/IEC 61851)
<b>Fixed cable types</b>	CCS 2 / CHAdeMO / AC Type 2
<b>Number of fixed cables</b>	One up to three fixed cables
<b>Fixed cable length</b>	4.5 m / 3.95 m with cable auto-retract (optional)
<b>Connectors</b>	Type E/F / AC Type 2
<b>Communication</b>	GPRS/3G Modem and Ethernet
<b>Housing</b>	Galvanized steel (structure), aluminum (casing), stainless steel (feet)
<b>Mounting</b>	Floor / Ground (optional with clamping / sealing kit)

Consult the **EVBox Troniq 50 Product Brochure** for all technical features.

*\*Based on the average consumption of 18 kWh per 100 km.  
Actual consumption depends on the vehicle, battery size, and driving conditions.*

**50 kW**

Charges up to 125 km in 30 minutes\*



# EVBox Troniq 100

Fast charging solution

## Dependable

charging for every vehicle

- High-quality electrical components and rugged housing
- Remote firmware updates and status monitoring

## Hassle-free experience

for every driver

- Auto-retractable cables
- 7" multi-language touchscreen with optional credit card terminal

## Scalable

for every (future) charging network

- Compatible with any charging management backend
- Load balancing between multiple stations

<b>Charging capacity</b>	100 kW
<b>Charge modes</b>	Mode 4 (DC charging – CHAdeMO and CCS2)
<b>Fixed cable types</b>	CCS2 / CHAdeMO
<b>Number of fixed cables</b>	Two fixed cables
<b>Fixed cable length</b>	up to 3.5m with auto-retractable cables
<b>Socket types</b>	JEVS G106 (CHAdeMo), CCS2 (Mode 4)
<b>Communication</b>	4G/LTE and Ethernet
<b>Housing</b>	Galvanized steel (structure), aluminum (casing), stainless steel (feet)
<b>Mounting</b>	Floor / Ground (optional with clamping kit)

Only available in North America and other regions that require UL certification.

Consult the **EVBox Troniq 100 Product Brochure** for all technical features.

*\*Based on the average consumption of 18 kWh per 100 km.*

*Actual consumption depends on the vehicle, battery size, and driving conditions.*

**250 kW**

Charges up to 125 km in 30 minutes\*



# EVBox Ultroniq

Ultra fast charging solution

## Flexible

charging for everyone

- Compatible with CHAdeMo and CCS 2 connectors
- Branding customization
- 15" multi-language touchscreen

## Effortless maintenance

for peace of mind

- Scalable architecture that's easy to install and maintain
- Integrated cooling system

of every charging network

- Load balancing between multiple stations
- Prioritization features for charging sessions

<b>Charging capacity</b>	175-350 kW
<b>Charge modes</b>	Mode 4 (DC charging)
<b>Fixed cable types</b>	CHAdeMO up to 500 V / 200 A / 100 kW CCS2 up to 950 V / 200 A / 175 kW CCS2 up to 950 V / 375 A / 175 kW CCS2 up to 950 V / 500 A / 350 kW CCS2 dry cable and CHAdeMO (UU 200) CCS2 cooled cable and CHAdeMo (UU 500)
<b>Number of fixed cables</b>	One or two fixed cables
<b>Fixed cable length</b>	4.5 m with auto-retractable cable
<b>Communication</b>	4G/LTE and Ethernet
<b>Housing</b>	Galvanized steel (structure), aluminum (casing), stainless steel (feet)
<b>Mounting</b>	Floor / Ground (optional with clamping / sealing kit)

Consult the **EVBox Ultroniq Product Brochure** for all technical features.

*\* Based on the average consumption of 18 kWh per 100 km. Actual consumption depends on the vehicle, battery size, and driving conditions.*

*\*\* Please note that this is a preliminary illustration of the product—the final product and data are subject to change. The first products shipped will be equipped with a 7" screen and without the LED rings.*



**From 175 to 350 kW**  
Charges up to 400 km in 15 minutes\*



# EVBox Accessories

## Charging optimization

### Charging cables

- Remains flexible in cold weather conditions
- Prevents cable buckling
- Made of heat-resistant materials
- Three years of warranty

### Station poles and brackets

- Made of stainless steel
- Available in various models and lengths
- Suitable for wall, foot, and concrete installations
- Applicable for EVBox Elvi and BusinessLine models

### Branded labels and cards

- Made for commercial and public use
- Logo and text placement
- Custom designs
- Applicable for station labels, charge cards, and key fobs

### Parking and road signs

- Made for commercial and public use
- Made of stainless steel
- Equipped with aluminium brackets
- Available with single or double arrows
- Based on local government standards



# Partner with us

Partnering with EVBox gives you access to dozens of offices and markets across EMEA, APAC, LATAM, and NA. We also provide you with targeted value propositions and a complete product portfolio to help you achieve your business goals.

Today, we serve hundreds of partners worldwide, including value-added resellers (VARs), distributors. Partnering with us is simple: we offer a range of charging solutions tailored to your business model, so you're equipped with the knowledge and skills to expand your offering.

**“What I appreciate about EVBox is its ability to reconfigure charging stations in the field. To be able to reconfigure the stations after installation eliminates buyer’s remorse and promotes solid relationships among all involved parties. We’ve positioned ourselves as a leading distributor of EVSE by providing industry leading equipment along with unmatched customer service. Partnering with a global leader like EVBox who has a similar culture was a no-brainer.”**

**MIKE MOSER**

Founder & President, EV Charge Solutions

1

## APPLICATION

Fill in your details and submit your application at [evbox.com/partners](https://evbox.com/partners).

2

## CONFIRMATION

We'll give you a personal call to confirm your application.

3

## VERIFICATION

We'll verify your eligibility based on your industry, market reach, company size, and revenue.

4

## AGREEMENT

Once all is agreed, you can sign your distributor / reseller agreement.

5

## ONBOARDING

You'll join our **Partner Program** and access:

- Our Partner Portal to manage orders
- Your knowledge and support center
- Training modules to get fully certified

6

## GET STARTED

You're ready for your first order.

Get started today at [evbox.com/partners](https://evbox.com/partners)

# Charge with us

We tailor electric mobility your way with flexible EV charging stations, scalable charging management software, and a comprehensive list of support and services—all in one place. Simply follow the next steps and we'll give you a call to discuss your charging needs. We can't wait to get you started on your journey toward sustainable mobility.

**"It's important that anyone engaged with our organization knows we are serious about providing sustainable energy solutions—providing EV charging is a means of communicating that. We were looking for a EV charging provider who shared our values, and EVBox provided a Smart Charging solution that met our needs—and what's more—the chargers were color-matched to our building facade too!"**

**MARK HOWELL**

Operations Manager, Southampton Geothermal Heating Company (SGHC)

**1****TELL US YOUR PREFERENCES**

Enter your preferences in this short online form [evbox.com/quote](https://evbox.com/quote). It's free and takes just two minutes.

**2****GET YOUR FREE QUOTE**

We'll give you a call to discuss your needs and provide you with a commitment-free price estimation.

**3****TECHNICAL VISIT**

Upon approval, our technicians will inspect your site and power capacity to determine your plan and price.

**4****INSTALLATION**

Our certified installers will safely set up your new station at the optimal location on your site.

**5****MAINTENANCE & SUPPORT**

Alongside our partners, we provide you with ongoing maintenance and support. We're available 24/7 online and via phone.

Get started today at [evbox.com/quote](https://evbox.com/quote)







Copyright © 2020 EVBox Manufacturing B.V. Elvi®, EVBox® and the EVBox logo are registered trademarks. All rights reserved. EVBox has compiled this document to the best of its knowledge but does not warrant that all information provided is error-free; EVBox does not accept liability in that respect. All specifications are approximates only. The limited warranty conditions are stated in the applicable EVBox general terms and conditions. EVBP1\_EN\_032021 © EVBox Manufacturing B.V. EVBox Manufacturing B.V., Kabelweg 47, 1014 BA Amsterdam, The Netherlands, [evbox.com/support](http://evbox.com/support)

Powering our sustainable future

